

PIZZA PARTY & DANCE—MAY 23, 2008



Good friends & GREAT times!

Rocky



SUBCONTRACTING DEPARTMENT

e RECYCLE

We provide a **FREE, easy, and effective** way to dispose of all obsolete or outdated computers, cell phones, printers, etc. . . . (working or non-working) that are used in offices, schools, homes, and by people on the go. **IN FACT . . . we accept almost any small appliance that has a cord!**

We accept the following electronics:

- Computers
- Monitors
(not cracked or broken)
- Mouse
- Keyboards
- Printers
- Cell phones
- Fax machines
- VCRs
- DVD players
- CD players
- Satellite receivers



. . . AND MOST OTHER "CORDED APPLIANCES" (working or non-working) including:

- Hair care appliances
(Blow dryers, curling irons, etc)
- Electric power tools
(Saws, drills, etc)
- Small electric kitchen appliances
(Mixers, toasters, etc)
- Other electric household appliances
(Clocks, fans, etc)

**The computers that we collect are recycled . . . NOT reused or refurbished.*

To accommodate our customers we have a **DROP-OFF** site at 304 Clay Street in Chillicothe that is available Monday through Friday from 8:00 a.m. to 3:30 p.m.

We offer FREE pick up for larger quantities!

For additional information call Carole at 660-646-5172 or 660-247-1967.

PALLET SHOP

Hope Haven's Pallet Shop supplies new and used customized pallets to customers. Pallets can be picked up at 304 Clay Street or we have the ability to haul by the semi load or straight truck load. The Hope Haven Pallet Shop offers the following services:

- Manufacture new pallets
- Reconstruct used pallets
- Manufacture crates
- Provide covered spacer boards
- Heat treated pallets

Shipping crates are also manufactured in our pallet shop. Prices vary depending on pallet or crate requirements. Please call 660-646-5172 or email info@hopehavenindustries.org for specific pricing.

If you have used pallets you would like to dispose of, please contact Hope Haven at 660-646-5172.

RECYCLING RENOVATION UPDATE

Certain project costs have been underwritten by the Missouri Department of Economic Development, Neighborhood Assistance Program



BEFORE: Southeast end; mud/gravel driveway & future storage area



AFTER: Completed concrete driveway & storage area



BEFORE: Driveway on south side



AFTER: Concrete drive & storage area



BEFORE: East end of the Recycle Center building



AFTER: Concrete on east end of the Recycle Center building completed



BEFORE: Dock area



AFTER: The concrete for the dock area completed



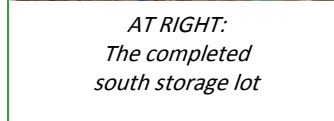
AT LEFT: The completed south side of the Recycling Center



BEFORE: Exterior of the south side



AFTER: Exterior of the completed new extension on the south side



AT RIGHT: The completed south storage lot



AT LEFT: The construction continues!

RECYCLING RENOVATION DONORS

BTC BANK

Chillicothe, MO

Bank Midwest

Chillicothe, MO

Catering St. Louis, Inc

St. Louis, MO

Chillicothe Iron & Steel

Chillicothe, MO

Chillicothe State Bank

Chillicothe, MO

Citizens Bank & Trust

Chillicothe, MO

Janet Dailey

Branson, MO

Dickinson Financial

Kansas City, MO

Investors National Bank

Chillicothe, MO

John & Virgie Irvin

Chillicothe, MO

Marck Industries

Cassville, MO

Midwest Quality

Gloves, Inc
Chillicothe, MO

Victoria & Greg Nelson

Kansas City, MO

The Kelley Foundation

Chillicothe, MO

The Mervyn Jenkins Foundation

Chillicothe, MO

Jerry Wilford

Chillicothe, MO

MEET HOPE HAVEN (New Hires, Rehires, & Changes Within)

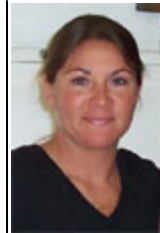


Don Ruddy (at left) was rehired as a supervisor at the Chillicothe Recycling Center on April 21, 2008. Welcome back Don!



Joe Hobbs (at left) is Hope Haven's newest staff member. His first day was June 17, 2008, as truck driver. Welcome Joe!

(NOTE: Joe Hobbs is **NOT** related to Carole Hobbs, our beloved manager!)



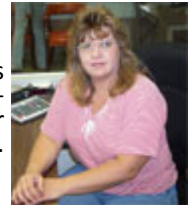
Neva Olson (at left) is Hope Haven's new Recycling Center Manager effective May 12, 2008. Congratulations Neva!

Nancy Standiford (at right) was rehired to work at the Chillicothe Recycling Center on May 7, 2008. Welcome back Nancy!



Anyone interested in more information about employment or volunteer opportunities with Hope Haven is encouraged to contact Carole or Donna at 660-646-5172.

Robin Hussey (at right) is Hope Haven's new Sub-Contracting Manager effective May 12, 2008. Congratulations Robin!



HOPE HAVEN RECYCLING CENTER

The Hope Haven Recycling Center (660-646-0028) is located at 12 Herriman Street in Chillicothe and is open for can purchases from 8:00 a.m. to 2:30 p.m. Monday through Friday. Cans are purchased at New Hope (660-339-7880) on Monday, Tuesday, Wednesday, & Friday from 12:30 to 2:30 p.m.

CAN PRICE = .50 per pound (until further notice)

For the customers convenience the recycling trailer is available for after-hours drop-off at the Recycling Center on weekdays and at Wal-Mart on specified weekends (watch your local paper for dates). Items can also be dropped of at New Hope located at 3300 Pleasant Plain (Trenton). Items accepted are:

- Newspapers
- Cardboard
- Magazines
- Mixed paper (Junk mail, catalogs, etc)
- Container plastic (#1 & #2 containers)
- Plastic grocery bags
- Plastic stretch wrap
- Tin cans (food cans)
- Aluminum (Cans, pie plates, & foil)
- Shredded paper (Keep separate)

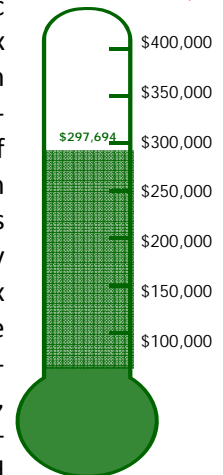
Recycling audits are available to manufacturing firms, businesses, schools, and organizations interested in recycling with Hope Haven.

TOURS OF THE RECYCLING CENTER are available to groups, schools, or individuals by contacting Carole at 660-646-5172 or 660-247-1967.

HOPE HAVEN HAS TAX CREDITS TO GIVE YOU . . . through the Neighborhood Assistance Program!

The Missouri Department of Economic Development has approved 70% tax credits for the \$440,000 Hope Haven Project. Eligible participants that donate to this project will receive 70% of the value of their donation back in Missouri income tax credits. Donors may claim the tax credits when they file their Missouri tax return. The tax credits may be carried forward for five years beyond the donation year. Donations may be given in the form of cash, materials/supplies, equipment, professional services, labor or publicly traded stocks and bonds. Any donation made toward the project will be used exclusively for the recycling renovations.

GOAL = \$440,000

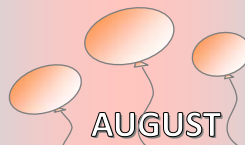


If you have questions about the tax credits or are interested in providing a donation to the Hope Haven Recycling Renovation project, please contact Carole at 660-646-5172 or email info@hopehavenindustries.org.

JULY

- 1st Everett Butcher
- 10th Neva Olson
- 16th Stacy Hoselton
- 17th Lori Baldwin
- 18th Eugene Turner
- 28th Loretta McClure
- 30th Gary Reed

HAPPY BIRTHDAY!



- 9th Laura Buck
- 11th Jeff Hoselton
- 19th Eugene Hennen

SEPTEMBER

- 2nd Paul Goodman
- 3rd Donna Windmeyer
- 17th Helen McAnally
- 19th Randy Hughes

